

A vibrant, stylized illustration of a jungle scene. A large, thick tree trunk with orange and red bark and yellow spiral patterns is the central focus. A brown monkey hangs from a branch on the left. A tiger with orange and black stripes is on the right. A toucan with a large orange beak is in the top right. A striped snake is at the bottom. The background is filled with various green and blue leaves and plants.

2017

Bajo®

wooden toys

www.bajo.eu

About **BAJO**®



Established in 1993 by Wojciech Bajor, an architect and scenic designer started Bajo toys as a local family business. Now BAJO is an innovative company built on the primary element of the sustainable resources and development. The Bajo factory is located at the foot of the Polish Carpathian Mountains, environment which inspires us to maintain our sustainable solutions. We strongly believe we must always take into consideration any far reaching consequences our actions may have during toy creation. It applies to all of our work, from the birth of our concepts and toy design, ending with the company's waste policy.

The toys we design bring out our passion and love for their uniqueness and quality. This gift comes from the heart of Bajo. The toys reflect the essence of childhood. Every single toy is individually made with great care, precision in every detail. Each of these unique items has its own story which is result of long hours of designing and customizing to children and parent's specific needs.

We give importance to the aesthetics of toys. Inspired by a classical trilogy Truth, beauty and goodness. We try to create beautiful objects, valuable not only for their utilitarian character. BAJO toys are often created with reference to pedagogical aids used for educational and physical development often used in kindergartens. In the same light, BAJO have participated in many educational and developmental projects, which encourage positive social changes and increase of the environmental consciousness.

Children make the Bajo toy their own by creating their own rules and ways of playing. Bajo toys are created not to inhibit their imagination. We make an effort to design multi-functional toys, which at the same time trains child's intelligence, dexterity and their awareness. Our toys are focused on sustainable development of the various types of the imagination: colouristic, spatial, motor, symbolic and creative. They learn to think analytically or abstractly.

We use the variety of deciduous trees of original graining, we expose its natural colour and we allow it to darken and stain. **In the case of every toy, we always do our best to preserve at least one, even if it is only a very small part, to be completely natural. The natural element gives a child the chance to feel the natural warmth of wood.**

In 2013 BAJO launched a new design collective, and called it **"TOBE"**. This project brings to market creatively designed toys from multiple designers.

At about the same time BAJO designed and produced under license a toy collection based on the award-winning children's book written by Julia Donaldson and illustrated by Axel Scheffler : **The Gruffalo**.

Our toys correspond to all EU and US standards and requirements for toys safety (directive 88/378/EWG, 93/68/EWG, 2009/48/EC and REACH regulations) in terms of materials, manufacture and labelling. We use only the safest certified non-toxic paints based on natural components, which fulfil EU safety standard (EN71) and US norms. We support our community by using only carefully selected high quality materials from certified local suppliers, who respect European eco-standards of the wood production. Each product is hand-checked to ensure quality of the completed item.

All of our products are manufactured in Poland.

A handwritten signature in black ink, reading "Wojciech Bajor".



Material
Colours
Packaging

about Bajo

Rattles
Push & pull along
Animals

infant toys 6 - 20

Small vehicles
Large vehicles
Tractors and trucks

vehicles 21 - 32

Pyramids
Sorters
Simple math
Numbers & letters
Lacing toys

education 33 - 44

Games
Puzzles
Blocks
Outdoor games

puzzles & games 45 - 66

Role playing

role playing 67 - 73

Mobiles
Decoration

decoration & interior 74 - 76

TOBE
Gruflallo

produced by Bajo 77-85



Product

Material



We only use carefully selected high quality materials from certified local suppliers, who respect European eco-standards of wood production. Below is our wood selection:



beech



birch



sycamore



black oak



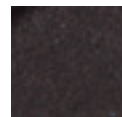
cherry



plum

Colours

We use only certified non-toxic paints based on natural components, which fulfil EU safety standard (EN71) and US norms. We use wide range of water based paints as well as oil to protect the wood.



black



natural



oil



yellow (Y)



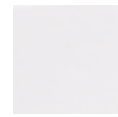
red (R)



blue (B)



green (G)



white



silver (S)



mint (M)



light blue (LB)



violet (V)



pink (P)



orange (O)

Product guide



Age grading icons, you can find them next to each toy's description.



Toy has a bell.



Recent years new toys.



Difficulty levels of puzzles or games: simple, medium, hard.

Please note, some (not all) of our toys may come in different colours. If you prefer a certain colour, please add the correct suffix to the product code on your order form. Otherwise, we will send you the toy in the colours we have available. For example for a red snail please quote 11510R, if you have no colour preference please quote 11510.

Product code

colour symbol

11510R

toy's name — Snail

toy's dimensions — 9 x 7 x 7 cm

toy's description

Packaging

We use cardboard boxes with brown screen printing. Boxes without a window have coloured label presenting the toy.



BAIQO®
essentials





Infant toys



This group of toys, dedicated for children aged 1+ is inspired by the world of animals. Horses, frogs, ducks, dogs or our personal favourite, ladybirds. This follows the theme of promoting movement and playing together with nature. It perfectly meets the needs resulting from the natural sensitivity of a child to touch and elements around them. Symbolism of wooden shapes of toys directly addresses the child's imagination. It develops language skills and intentional

communicating with the environment. We take great care of manufacturing the toys and apply the same emphasis to quality to guarantee safety. This has been confirmed with European Regulations by TUV Rheinland and SGS.

Rattles



11710Y

Bird

8 x 5 x 8 cm

available in 3 colours*



11720
natural



11710Y



11710B



11710R



12010B

Fish

9 x 5 x 7 cm

available in 3 colours*



12020
natural



12010B



12010Y



12010R



11510R

Snail

9 x 7 x 7 cm

available in 3 colours*



11510R



11510O



11510B



11810G

Frog

7 x 5 x 7 cm



*Colours will be selected according to availability unless otherwise stated when ordering.

1:1

Push & pull along



Rolling dots on the ladybird allow her to glide on any surface.

1+

12310
Ladybird
14 x 12 x 4 cm



1+

12410B
Butterfly
14 x 11 x 4 cm
available in 5 colours*



12420
natural



12410O 12410P 12410R 12410V 12410B

1+

12320
Ladybird
natural



*Colours will be selected according to availability unless otherwise stated when ordering.

1½+

34710R

Hammering board

22 x 13 x 13 cm



BAIO®



1½+

21510

Wobbly goblin

10 x 10 x 13 cm



Pull the goblin and
watch how they start
moving their heads left
and right.

1½+

24110

Goblin 2

14 x 7 x 14 cm



Push & pull along

1+

37830
Sortroller
22 x 16 x 18 cm



The Sortroller consists of two parts: the body of the snail (wheeled base) and its shell (cylinder shaped). Pull the Snail's body and watch its shell roll magically round. Take the shell off and use it as a sorter. It has 6 different shapes to slot the wooden shapes through. This helps the child to distinguish between shapes and enhances their dexterity. You might even find the very young using it as a rattle when shaking the shell full of shapes.



1+

37840
Sortroller
natural
22 x 16 x 18 cm



Push & pull along



1½+

23910

Carousel

44 x 17 x 44 cm



Push-along toy with improved wheels which stabilizes the push toy and helps toddlers in handling. The faster it is pushed the faster the wheels turn and the faster the carousel turns. Up, up and up go the horses just like the real one.

1½+

24510

Flower "Rainbow"

44 x 17 x 44 cm



Push-along toy improved wheels which stabilizes the push toy and helps toddlers in handling. When the wheels turn it makes the petals of the flower rise and spin. The flower opens and floats creating a rainbow.



Push & pull along

1½+

24410
Jumping frogs
40 x 17 x 44 cm

When pushed, frogs
go up and down
alternatively as if they
are jumping.



1½+

21910
Duck
17 x 17 x 60 cm



1½+

22110
Ladybird
17 x 17 x 60 cm



1½+



22210
Rattle
10 x 14 x 65 cm



1½+

22230
Mice & cat
10 x 14 x 65 cm



Twist both parts together and tighten
firmly.

Animals • Horses



1
1½+

23610R

Rocking horse
16 x 6 x 12 cm
available in 2 colours*



23620
natural



23610R



23610G

1
1½+

21710

Jumping horses
14 x 9 x 12 cm
available in 2 colours*



21710R

21720
natural

21710W



17
 21760

Pull the cord and the horses spring to life.
The horses gallop side by side, alternating
their strides.

*Colours will be selected according to availability unless otherwise stated when ordering.

Rocking horses can have an additional safety frame which is suitable for younger children. It can be removed as the child gets bigger.

1+

52460

Rocking horse
86 x 31 x 65 cm



1+

52520

Rocking horse
97 x 35 x 69 cm



1½+

53410

My horse
25 x 23 x 100 cm



1+ 

53610

Clip-clop
rocking horse
86 x 30 x 60 cm

*Imitates the sound
of a horse's gallop*



Animals • Tube animals



By incorporating special thick cardboard tube in the design of these toys, we gave to some of them an empty space inside where children can easily deposit and retrieve their treasure, the animal becomes the guardian of the child's special objects.



22950BL

22950W

Pony - keepsake box

31 x 13 x 30



78510

Dog - Ride on
seat height 23 cm



78500

Hippo - Ride on
seat height 23 cm





22970
Dog - keepsake box
23 x 13 x 30 cm



22930
Elephant - keepsake box
30 x 13 x 17



22910
Kitten - keepsake box
23 x 13 x 30



22990
Pig - keepsake box
23 x 13 x 30 cm





22840
Baja dog
26 x 19 x 14 cm



21120
Dachshund
38 x 13 x 18 cm



21140
Black oak



21210W
Dachshund puppy
18 x 7 x 11 cm
available in 4 colours*



21220
natural



21210R 21210B 21210Y



21240
Black oak



Special connections between wooden parts make an impression that dachshund moves as real animal when pulled along. His body and tail wag when his funky ears flop.

*Colours will be selected according to availability unless otherwise stated when ordering.

Animals • Others

1½+

23210

Crocodile

24 x 6 x 9 cm



1½+

21410

Jumping frogs

19 x 9 x 10 cm



1½+



26010

Cicada Bar

13 x 7 x 7 cm



1½+



26030

Caterpillar Ba

11 x 6 x 6 cm



1½+



26050

Beetle Ra

11 x 6 x 7 cm



1½+



25090B

Small rabbit

11 x 9 x 6 cm



25090LB



25090W



25090M



25090P



25090N

Pull the frogs forward or backward and they jump forward alternatively imitating the motion of real animals.



1+

21530
Wobbling
penguin
10 x 14 x 10 cm



1+

21550
Wobbling chicken
13 x 8 x 6 cm
available in 2 colours*



21560
Wobbling chicken
natural



21550R



21550B

1½+ 

25080LB
Big rabbit
21 x 14 x 9 cm



25080LB

25080W

25080M

25080P

*Colours will be selected according to availability unless otherwise stated when ordering.

Animals • Others



27010LB

Ghost T
7 x 8 x 7 cm



27010M

Ghost T
7 x 8 x 7 cm



27030

Mine Ghost
7 x 8 x 7 cm



27050

Eye Ghost
7 x 8 x 7 cm



23310

Ladybird
14 x 5 x 9 cm



25110

Black sheep
14 x 7 x 11 cm



21810

Dragon
17 x 10 x 18 cm



When pulled, the dragon opens his mouth and flaps his wings.



Vehicles



There is wide variety of toys which introduce topics of common traffic, speed and mobility in the world of play. Stylised, colourful, in various shapes and sizes, these cars are not intended to merely imitate cars from the world of adults. They refer rather to the child's imagination and develop spatial orientation, the sense of direction and distance.

The collection of large and small, very colourful vehicles, includes:

- Trucks and Tractors, which may be loaded and unloaded who use different items to transport different items.

- Emergency vehicles: ambulance, police, fire brigade and road inspection
- Passenger vehicles: buses, passenger cars of various types and makes
- Aircrafts and helicopters, which travel along with the child.

Small vehicles



push-pull
car!



49410

Pullback car
9 x 6 x 5,5 cm

available in 4 colours*



49410R



49410B



49410O



49410G



This car has a gearbox mechanism; pull it back a few times and the car will propel itself forward.



49310

Car with beads
13 x 8 x 6 cm



49320

Car with beads
natural



1+

43710

Auto Beetle

7 x 5 x 5 cm

available in 6 colours*



43720
natural



43710Y

43710O

43710R

43710P

43710V

43710B

1+

41310

Mini car

7 x 5 x 5 cm

available in 6 colours*



41320
natural



41310Y

41310O

41310P

41310R

41310LB

41310G

1+

42510B

Small car - Ellipse

7 x 5 x 5 cm

available in 6 colours*



42520
natural



42510Y

42510O

42510P

42510G

42510B

42510R

1+

49110B

Smart

7 x 5 x 5 cm

available in 7 colours*



49110Y

49110P

49110R

49110V

49110G

49110O

49110B

1+

42710B
Police car
7 x 5 x 6 cm



1½+



41810
Fire engine basic
15 x 5 x 9 cm



1+

44330
Ambulance
10 x 5 x 8 cm



1½+



41830
Fire engine
15 x 5 x 9 cm



1+

46010
Postal car
10 x 5 x 7 cm



1½+

41110
Breakdown lorry
15 x 5 x 10 cm



Toy comes in three parts: a lorry, a blue car and a blockade/ramp.

1½+

41110Z
Emergency vehicles set
4 vehicles



1½+

41610
Steamroller
10 x 6 x 7 cm
available in 4 colours*



1+

44310
Ambulance
13 x 5 x 8 cm



Small vehicles



1½+

46410

4WD car & boat
20 x 5 x 8 cm
available in 4 colours*



46410Y 46410G 46410B 46410R

1½+

46450

4WD car & horse
20 x 5 x 8 cm
available in 4 colours*



46450B 46450Y 46450G 46450R

1½+

42410

Truck with logs
18 x 5 x 7 cm
available in 4 colours*



42410R 42410B 42410Y 42410G

1½+

43110

Tractor with blocks
21 x 6 x 8 cm
available in 2 colours*



43110R

43110B

*Colours will be selected according to availability unless otherwise stated when ordering.

1+

42310

Small truck
with blocks
12 x 5 x 8 cm
available in 4 colours*



42310R

42310Y

42310G

42310B

1+

41510

Bus
13 x 5 x 7 cm
available in
4 colours*



41510Y



41510R



41510B



41510G

Autotransporter comes
in four parts:
a truck, a trailer and
two small cars.

1+

41410

Autotransporter
18 x 5 x 10 cm



1+

49210

Big limo usine
19 x 5 x 7 cm





2+

42030

Plane with pilot
12 x 10 x 7 cm
available in 4 colours*



42030R

42030B

42030Y

42030G

2+

41910

Airplane
15 x 15 x 7 cm
available in 3 colours*



41910Y

41910B

41910R

2+

45510

Ambulance
helicopter
8 x 7 x 8 cm



2+

45710

Police helicopter
8 x 7 x 8 cm



2+

45610

Fire engine
helicopter
8 x 7 x 8 cm



*Colours will be selected according to availability unless otherwise stated when ordering.

Large vehicles



1+

41270D
Boogie
18 x 9 x 6 cm



1½+

42910
Racing car
8 x 5 x 5 cm
available in 4 colours*



42910R



42910Y



42910G



42910B

1+

41230
Racing car F
18 x 9 x 6 cm
available in 5 colours*



41230R



41230B



41230S



41230G



41230Y

2+

41250

LR car

16 x 8 x 7 cm

available in 3 colours*



41250B

41250R

41250G

This ingenious car, thanks to special construction, can move not only straight, but also turn right and left.

2+

47210

Retro car LR

16 x 8 x 7 cm

available in 4 colours*



47210W



47210Y



47210G



47210R



47110LB



47110G



47110R

2+

47110

Safety car

11 x 7 x 7 cm

available in 3 colours*



*Colours will be selected according to availability unless otherwise stated when ordering.

Large vehicles



49610

Eco autotransporter set
35 x 9 x 17 cm



boarding



ready to go

*This product includes only the Eco-car (shown in the picture)

**All Bajo® small cars fit perfectly in the Ecotrasporter set.
Children will be able to load this product with 4 small cars.



49630LB

Eco-car
9 x 5 x 6 cm



49650

Eco-limousine
9 x 5 x 6 cm



49670

Eco-sport car
11 x 5 x 4 cm



46490

Camper with surfboard
12 x 5 x 9 cm



49510

School bus
14 x 5 x 6 cm

Large vehicles



Be wowed by the movement of this train. When the wheels go round the train comes to life. Pull it forward and watch the train's engine move independently from its driver cabin. At the same time its cargo turns around making the bell inside jingle.



41770

Choo-choo ding
26 x 11 x 9,5 cm



Trains consist of many interchangeable elements, each different in colour and shape. Children can create their own unique combinations by stacking cargo pieces on wheeled trailers in many ways. Play develops imagination and creativeness.



45310

Train to build
53 x 9 x 8 cm



43310

Tractor with wagon
40 x 12 x 13 cm



*Colours will be selected according to availability unless otherwise stated when ordering.

Tractors and trucks



Container of the cargo truck has a removable top wall. When installed, it serves as a sorter for three colourful blocks.

2+

44710

Truck PC, big
50 x 10 x 14 cm



2+

42110

Tipper
26 x 15 x 10 cm
available in 3 colours*



42110R

42110B

42110G





Education

Bajo's toys develop together with each child. Its educational element starts with its basic principal but as the child's abilities grow so does the full potential of BAJO toys reveal itself.

These educational wooden toys naturally introduce the basic building blocks of learning while playing:

- Experiencing shapes, proportions and colours: recognising, classifying and associating.

- Developing manual skills: self-reliance, concentration, resourcefulness.
- Discovering the relationships between shapes, colours, sizes: drawing conclusions, discovering rules.



Pyramids



39370

Caterpillar stacker
10 x 10 x 15 cm

*This pyramid is based on the idea of contrast among colors, therefore is not sorted from the brightest to the darker but its colorful rings are intercalated.



39330

Stacker pyramid
"10"
10 x 10 x 24 cm



39350

Stacker pyramid "5"
10 x 10 x 15 cm



38890

Rocket
9 x 9 x 20 cm



*The 'Rocket' is shown assembled and disassembled in the picture.



$1\frac{1}{2}+$ 

39390
Panda stacker
10 x 10 x 15 cm



Leaves can be assembled to make the top of the Palm pyramid.



1½+ 

39310
Palm stacker
12 x 12 x 27 cm



1+

38410
Josefine
10 x 13 x 29 cm

*The 'Palm stacker' is shown disassembled and assembled in the picture.

Sorters

2+

44740
Stacking
board "1-5"
35 x 11 x 6 cm



2+

44750
Stacking board
"Figures"
35 x 11 x 6 cm



2+

38110
Sorting board "Figures"
34 x 10 x 8 cm



Multifunctional educational toys which help develop shapes and numbers. The game encourages the toddler initially match colours and quantities. This is done by stacking the colourful pieces on the bolts. The bolts are on separate bases and are removable. They can be arranged on the rectangular frame in many combinations. This makes play more varied and interesting. A perfect example of a toy growing with a child's abilities. This toy helps with matching and counting skills.



This toy was awarded the **Best Design Award** by **The International Toy Fair in Nurnberg.**

A wooden scale helping to discover balance with the use of different cylindrical weights. Here the child develops an understanding of proportions, weights and colours. Each weight is interchangeable to create their own pattern. Through comparing weights toddler experiences the effects of elementary physical phenomenon.



1+

34610

Balance

37 x 8 x 15 cm



2+

33510

Sorting board "10"

27 x 24 x 9 cm



An interesting version of a shape sorter. There are 10 pieces. All pieces of the same shape are in the same colour. The play stimulates shape recognition, trains the hand and the eye and develops precision.



Simple math

In this ingenious toy the abacus meets the stacking board. On one hand, ten rows of colourful rings arranged in order from the smallest to the highest make teaching child to count easy. On the other hand, it has all qualities of classic stacking board, in which toddler has to put pieces on bolts. Blockades at the end of ropes prevent rings from going astray.

2+

34450

Count 5 +/-

20 x 8 x 18 cm



This toy concentrates on mathematical operations supported by pedagogical resources. On the left side of the arch shows a number. The number shows how many blocks are piled on the left hand side. At the same time on the right side is the same number in picture format.

The colour of each block enhances the natural association the picture and number. The movement of adding or taking away the blocks helps to train manual dexterity while new numbers and images are uncovered. In this way you can subtract numbers from 1 to 5 and the operation will stay graphically depicted. The sum of elements on the left and right side will always equal 5.



3+

38210

Rope abacus

43 x 8 x 13 cm



3+

35810

Manual clock

27 x 10 x 31 cm

A wooden toy clock, which brilliantly brings the various ways of teaching how to tell the time all into one toy. It has adjustable colourful dial that shows hours in the form of the Hours, Roman numerals, minutes or fractions of a circle. The clock may stand on a removable rack or be hung on a wall. The clocks hands can be used manually or easily replaced by a real clockwork.

2+

32010
Sparrow Abacus
25 x 9 x 12 cm



3+

97630
Wooden fractions set
21 x 20 x 10 cm
55 elements



2+

38710
Abacus 50
30 x 12 x 18 cm



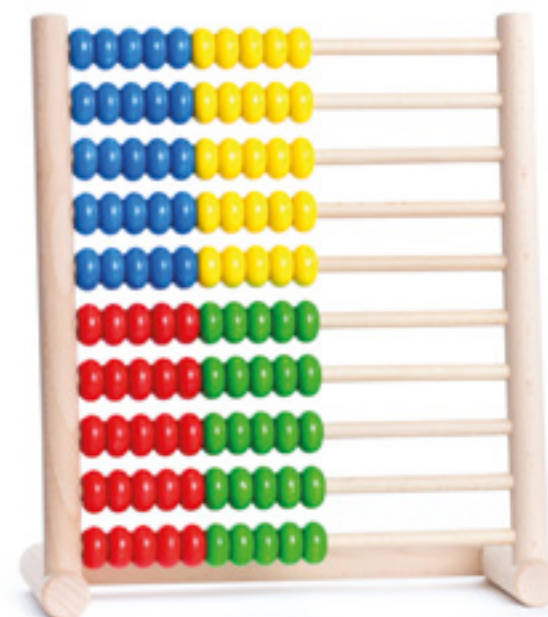
2+

32710
Stacker 1-5
36 x 11 x 19 cm



2+

38610
Abacus 100
30 x 12 x 34 cm



Multifunctional educational toy. Its primary function is to aid in counting. Colour and the quantity are its further uses. The of rods are associated with the number found below each row, which makes learning easier. You can easily demonstrate elementary mathematical operations by adding and subtracting the colourful rods. Wheels on sides add to the stacker toy an element of additional fun.

Numbers & letters



3+

92330

Alphabet blocks

4 x 4 x 4 cm x 16 pc

3+

91510

Alphabet

4 x 4 x 2 cm x 40 pc



On each side of the colourful cubic block there is a single letter. All together the alphabet blocks present 96 letters allowing to compose a huge variety of words and short sentences.

Alphabet is available in different languages.





3+

91570

Numbers & symbols

4 x 4 x 2 cm x 40 pc

Set of wooden blocks printed with numbers and mathematical operations.

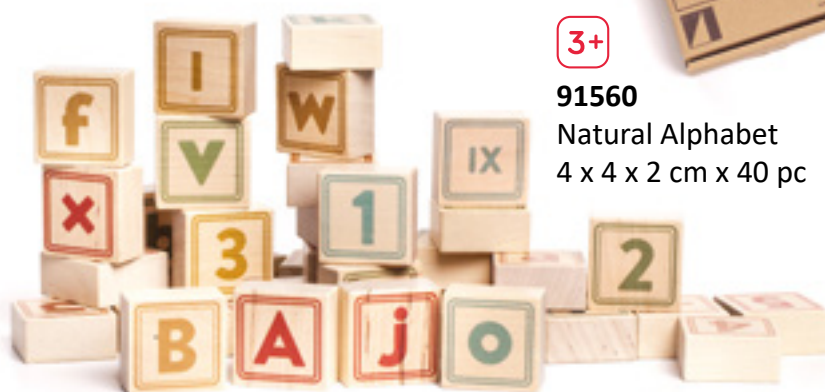


3+

91560

Natural Alphabet

4 x 4 x 2 cm x 40 pc



Doubled sided printed with either a letter, a number or a sign.
Set consists of lower and upper case letters.



3+

91590

Carved alphabet blocks

5 x 5 x 3 cm x 13 pc



Lacing toys



It's a simple game involving coloured threading laces through the holes placed in a variety of shapes - trees, animals, heads of funny hairstyles. Children can lace the strings by either repeating its outline or fill the inner to create different patterns of crosses or dashes. Lacing toys are classic examples of toys developing children's fine motor skills. Holding and threading and undo-ing the sewing motions all help in helping the hand to practice different skills needed for writing. Play with these toys develops imagination and shapes the sensitivity to the people uniqueness. Our Hairstyles lacing toy allows more imagination by creating different styles with the strings and beads provided.

3+

34110

Shoe & needle

13 x 7 x 15 cm

available in 6 colours*



34120

Shoe & needle

natural



34110Y

34110O

34110B

34110V

34110R

34110G

34120

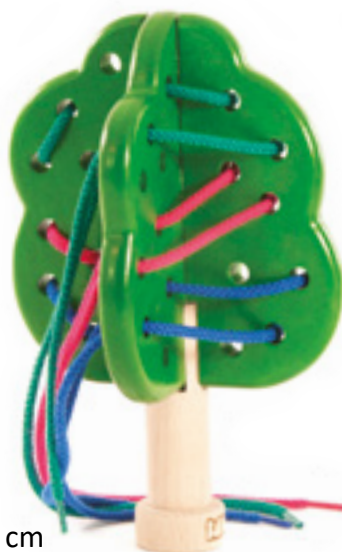
Play develops imagination and shapes the sensitivity to the people uniqueness. It consist in the creative use of strings and beads in order to make fancy haircuts for four heads of a different temper. By stringing and threading kid improves manual activity.



3+

39210

Funky Hair set
4 heads, 12 ropes, 36
beads, 4 bells
11 x 1,5 x 17 cm
(head size)



3+

37710

Apple tree
12 x 12 x 17 cm

3+

37610

Christmas tree
12 x 12 x 18 cm



3+

31130W

Sheep'n lamb
13(7) x 1,5 x 8 cm



Lacing toys



31410

Fox

18 x 1,5 x 6 cm

available in 3 colours*



39010

Rainbow beads 60

60 pc, 20 mm



98030

The snake



31420

Fox

natural



31410B



31410R



31410O

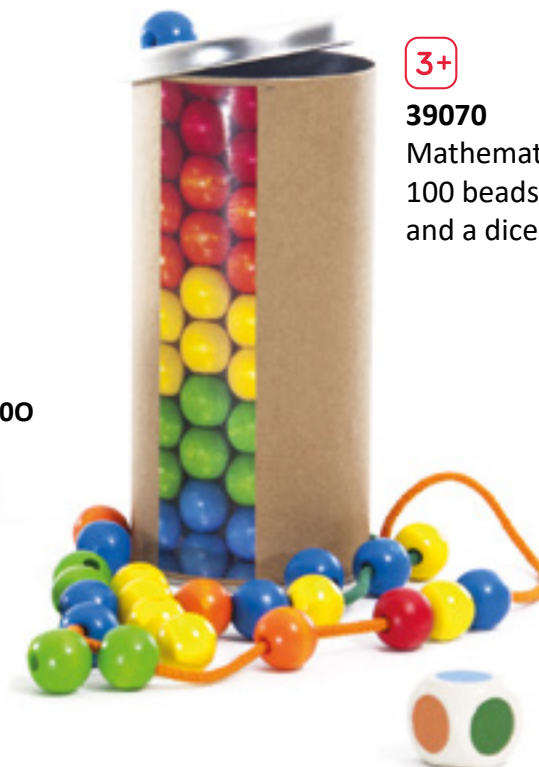


39070

Mathematical beads

100 beads, 5 laces

and a dice



*Colours will be selected according to availability unless otherwise stated when ordering.



Games & puzzles



These games and puzzles, join the relationship between the picture, block. We have developed a graphic style to trigger the imagination of every child and we have made games and puzzles as to challenge the child's skills while is learning and having fun.

We create these toys thinking about how decorative they can be, so the natural material and the colors on it make together a good looking object to have in every child's room.

A crowd, skyscrapers, a city and tropical animals all in a puzzle format ignite different elements of a child's character in the puzzle: surprise, humor, suspense.



Spinning top series

35570

Reversible
spinning top
4 x 3 x 3 cm
*available in
4 colours



35570R

35570G

35570Y

35570B

A Brilliant construction of the spinning top. Spin it the usual way and it always end up spinning upside down.



3+

35490B

Klik - Klak
8 x 2 x 20 cm
available in 4 colours*



35490G



35490R



35490Y



35490B



35480Y

35480R

35480V

35480G

35480B



36540

Semi circles B
7 x 7 x 7 cm



36510

Dots
7 x 7 x 7 cm



36520

Squares
7 x 7 x 7 cm



36530

Latern
7 x 7 x 7 cm

3+

35480

Yoyo
6 x 6 x 3 cm
available in
5 colours*



36620

Semi circles
7 x 7 x 7 cm



36630

Circles
7 x 7 x 7 cm



36650

Anna
7 x 7 x 7 cm



36660

Universe
7 x 7 x 7 cm



36670

Mondrian
7 x 7 x 7 cm



36640

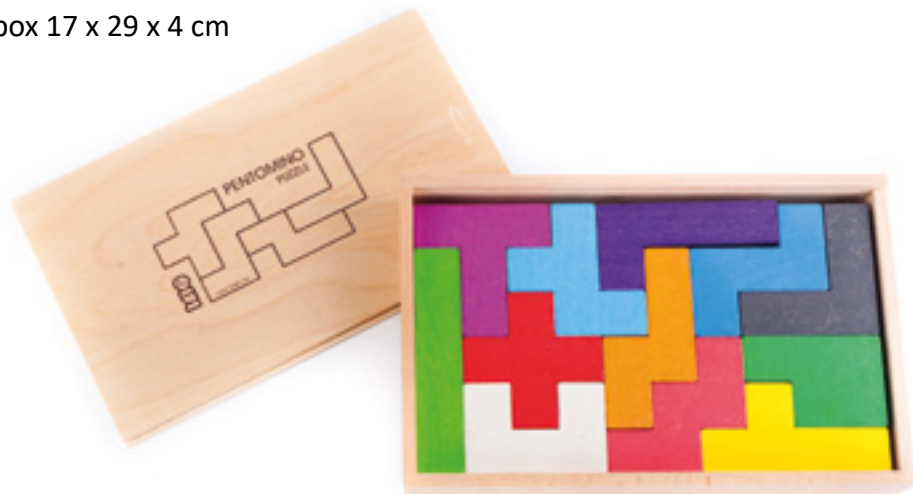
Echo
7 x 7 x 7 cm



Games



97610
Pentomino
box 17 x 29 x 4 cm



97650
Pentomino



The objective of this game for people of every age is to fit the twelve pieces into the box or to create, using all pieces, figures of which silhouettes are depicted in the booklet. Spatial form of blocks allows to make three dimensional figures or use them as bricks for building colourful constructions. Pentomino trains patience, develops analytical thinking and spatial imagination.

*Colours will be selected according to availability unless otherwise stated when ordering.

This traditional and ancient Chinese puzzle, trains ones analytical thinking. The Tangram consist of seven flat blocks packed in a classy wooden box that comes together with an extensive booklet filled with hundreds of patterns. The objective of the puzzle is to reconstruct the patterns, using all seven pieces given in the booklet as silhouettes. This game is for both young and old.



97010B
Tangram
19 x 19 x 3 cm



97010BL



97010R

Games



2+ 

91130

Domino animals
28 wooden blocks
8 x 4 x 1 cm



2+ 

34820

Domino XXL
28 pc
el. 15 x 7,5 x 2 cm



2+ 

91310

Domino figures
28 wooden blocks
8 x 4 x 2 cm



3+ 

99690
Memo animals
5 x 5 x 1 cm
36 pieces



BAIO®

3+ 

99680
Memo basic
5 x 5 x 1 cm
36 pieces



2+ 

99510 Domino (En)
99530 Domino (De)
99550 Domino (Fr)
Domino Pictures & names
28 wooden blocks
8 x 4 x 1 cm



In this domino game, players match words with their picture. Each word or picture can be found twice within the game. Players lay a domino piece down and then place a matching piece next to the first piece put down. To match pieces together either you place a word that matches the picture already placed or the picture to a word found on the table. This domino game has a shorter game time than the standard one. The aim of the game is encourage word and letter recognition.

3+

32860

Colored wooden pebbles
10 pieces
ø6 cm ø8 cm ø10 cm ø14 cm



1½+ 

97390

Elephant sorter
17 x 24 x 3 cm



1½+ 

97370

Sheep sorter
17 x 24 x 3 cm



3+ 

97530
Acrobats
8 coloured
wooden acrobats
8,5 x 1,5 x 9 cm



Game of physical and mental skills for 1-2 players, in which the objective is to create a stable pyramid out of eight colourful figures. It trains manual dexterity, precision of hand and patience.

3+ 

97510
Athlete
30 x 14 x 4 cm
60 sticks
& 1 athlete



A game of physical and mental skill whose objective lies in building upon a base in the form of the athlete the highest structure using 60 colourful sticks. Athlete can be played alone or by few players. It trains manual dexterity, precision of hand and patience.



3+ 

97520
Mendelsons
20 x 20 x 3,5 cm



Puzzles

1½+ 

99290
Princess
& Dragon
4 x 12 cm



1½+ 

99250
Little Red
Riding Hood
4 x 12 cm



1½+ 

99210
Four towers
4 x 12 cm



1½+ 

99230
Dragons
4 x 12 cm



1½+ 

99270
Cinderella
4 x 12 cm



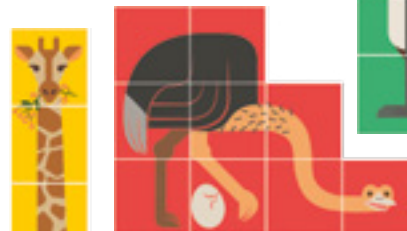
1½+ 

99130
Burrow & drawing
Double sided puzzle
box 14 x 26 x 4 cm





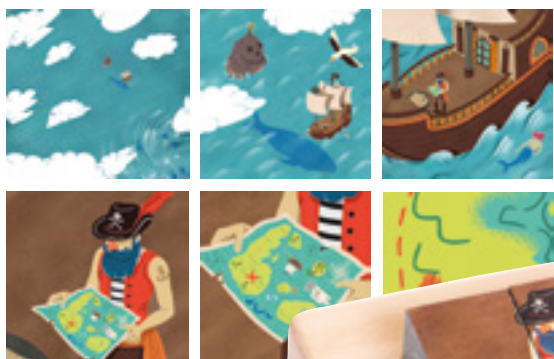
99110
Plane & frogs
Double sided puzzle
box 14 x 26 x 4 cm



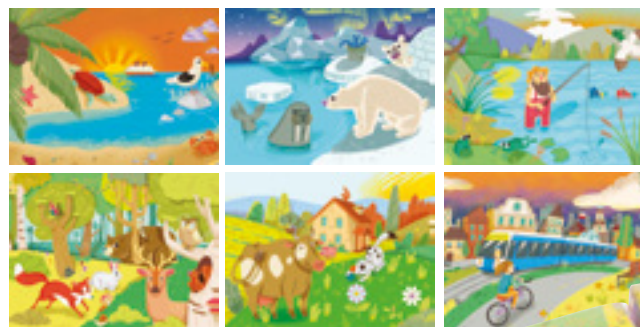
91870
ZOO cubes
4 x 4 x 4 cm
9 element puzzle



Puzzles



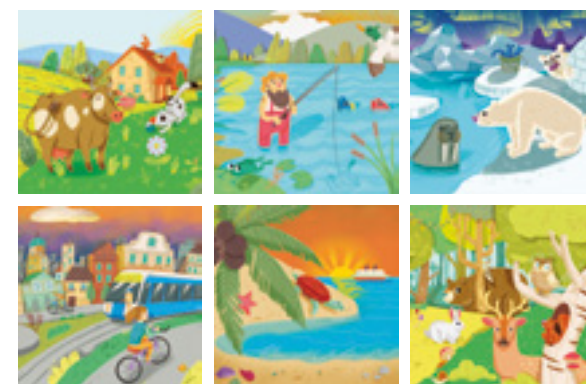
99070
Treasure map
“zoom puzzle”
(4 x 4 x 4 cm) x 4 pc

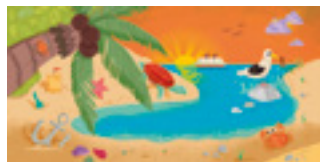


99190
Landscapes
Wooden puzzle
“Landscapes”
(4 x 4 x 4 cm) x 12 pc



91850
Landscapes
Wooden mini puzzle
“Landscapes”
(4 x 4 x 4 cm) x 4 pc





99170 City & beach



99150 Forest & polar



Wooden puzzle
"Landscapes"
10 pc
(4 x 4 x 4 cm) x 12



97490
Reef & Jungle puzzle
23 x 17 x 1,5 cm



Puzzles



1½+



99090

Little Red Ridding Hood story
(4 x 4 x 4 cm) x 4 pc



1½+



92060

Nocturnal animals
Wooden block puzzle
4 x 4 x 4 cm
4 pc



1½+

78020 (english)

78030 (polski)

Spell animals

6 x 2 x 2 cm

8 x 2 x 2 cm

10 x 2 x 2 cm

12 pc

12 words





99310 Animal kingdom (En)
99330 Im Reich der Tiere (De)
99350 Królestwo zwierząt (Pl)
 Self correcting word puzzles
 2 x 6 cm, 2 x 8 cm, 2 x 10 cm.
 12 pc



99370 Pictures & words (En)
99390 Bilder und Worte (De)
99410 Obrazki i słowa (Pl)
 Everyday items
 Self correcting word puzzles
 2 x 6 cm, 2 x 8 cm, 2 x 10 cm.
 15 pc



Puzzles



1½+

91070

Manhattan blocks set
base 25 x 25 cm
54 pieces, 9 colors,
6 shapes
and a board



2+ 

98110

Bajo totem
10 x 10 x 30 cm





97470
Jungle puzzle
17 x 24 x 1,5 cm
double sided
11 pc



97450
City puzzle
17 x 24 x 1,5 cm
double sided
9 elements puzzle



97410
Crowd puzzle
17 x 24 x 1,5 cm
14 wooden faces



The crowd jigsaw is an extraordinary intellectual puzzle, made in the highest aesthetic standard, where you have to match 14 unique faces together. A humorous game which shows diversity and differences between people. It may be use as a perfect pedagogical aid for nursery classes about social ideas.

2+

33910

Castle stacker
15 x 15 x 11 cm



1½+

91060

Building Blocks "43"
43 pc
module 2 cm





3+

91030
Gothic - block set
123 pc
box 24 x 24 x 8 cm



These are just few examples of what can be built. These blocks can be mixed to create your own new buildings.



1½+

91890
Architectural blocks
Building blocks "City"
(4 x 4 x 4 cm) x 16 pc

Blocks



1½+

91050

Building Blocks “102”

102 pc

module 2 cm



This set contains 102 blocks. Here our aim is to encourage recognition of colour and shape. It is great fun to swap and change the colours to make the building look exciting. Building blocks in black, blue, light blue, purple and lilac create pillars, columns, pedestals of your castle, giving it height and variety. Building blocks that are red, orange, pink and yellow are rectangular and form the walls of the building. Green blocks are smaller and angular. These pieces give the buildings individuality an architect can create. And finally the green blocks can inspire tree formations for example, Christmas trees or Cypresses.

3+

97550

Noah's Ark

30 x 10 x 15 cm

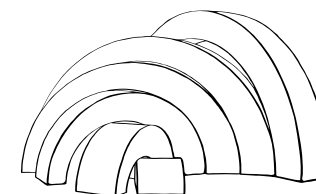
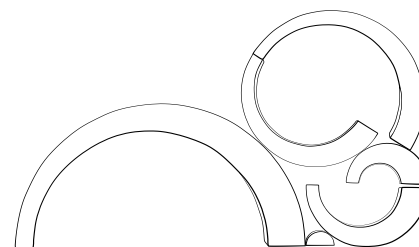


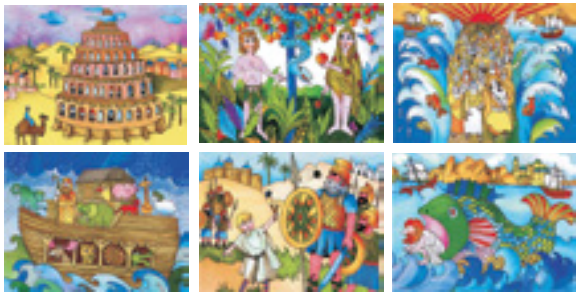
1 1/2+

78800

Asymmetrical Arches

28,5 x 14,5 x 4 cm





92410
"Bible" wooden block puzzle
(4 x 4 x 4 cm) x 12 pc



92210
"Myths" wooden block puzzle
(4 x 4 x 4 cm) x 12 pc

Outdoor Games



3+

97750

Angler

6 fish, 2 fishing rods

box 42 x 37 x 11 cm



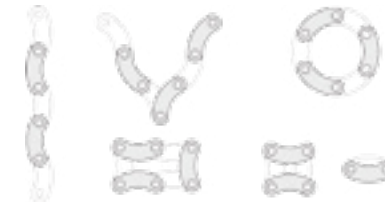
Outdoor games

This is a set of two popular games, that can be played indoors and outdoors; skittles and hoopla game.



1½+

95210
Fellow hoopla games set
50 x 100 x 18 cm



examples of arrangements



1½+

95110
Fellow skittles
Skittle height 18 cm

This is a mini version of the popular skittles game. It can be played on any flat surface like a table or the floor.

1½+

95130
Mini fellow skittles
Slide size 20 x 29 cm





Role playing



Its the oldest game in the world... acting as mom and dad. Children have always been fond of dolls, building houses, working in carpentry, workshops, transporting various goods in carts, teaching at school and galloping on horseback. We have developed these ideas. For dolls we have developed 2 types of prams, a bed which can be converted into a cradle. Our house can be extended to have an additional floor. The rocking horses can be modified for our younger riders.

And finally a wooden walker with rubber rings on its wheels which supports children while they walk. We have added an additional element: a cute little shelf which can also be a dolls pram.

Role playing

1+

74230

Coral Doll's
Buggy



1½+

74810

Doll's cot
43,5 x 27,5 x 23,5cm



When blockades are removed the
cot turns into a swinging cradle.

1+

74210

Doll's Buggy
55 x 34 x 60 cm



1+

74110

Doll's pram
57 x 34 x 56 cm



Stable wooden walker with rubber circles on wheels which helps children walk. Special shelf, when fasten, turns the walker into doll's pram.

1+

73110
Baby walker
51 x 33 x 50 cm



Baby walker has an adjustable handle.



Coral Baby walker
73130



Role playing

1½+

73190

Ladybird Ride On

43 x 21 x 40 cm

seat height: 24 cm



1½+

73150

Snail Ride On

45 x 26 x 48 cm



A beautiful ladybird with antenna's as handles. The ride on has adapted handles and front wheels for easy steering while its large back wheels give additional stability. The ride on and all its features allow the child to move freely while comfortably sitting on the back of a ladybird.



Role playing



1+

52010

Swing

35 x 25 x 150 cm



1+

52040

Round back Swing

35 x 25 x 150 cm

in cooperation with:

Justyna Zubrycka Design

1+

51160

Rocking motorbike

102 x 33 x 60 cm



51150



Role playing

1½+

24860Y

Velo

14 x 5 x 10 cm

available in 5 colours*

bambini
project



24860Y

24860G

24860LB

24860P

24860R



1+

53710C

Bajocycle

55 x 29 x 40 cm



1+

53710G

Bajocycle

55 x 29 x 40 cm



1+

53710W

Bajocycle

55 x 29 x 40 cm



73150GJ
Gym Joe
21 x 9 x 32 cm



99050A
Skipping rope



99730
Marble run rings "2"
60 x 15 x 60 cm



99710
Marble run rings "3"
60 x 15 x 60 cm





Decoration & interior

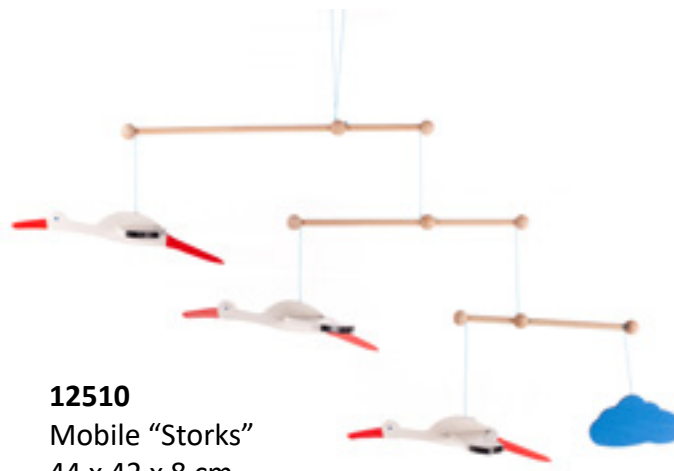


We have proposed various items that liven up a child's bedroom taken from their imaginative world. It consists of a wooden stork with the first 3 colours seen by babies. It is beautifully suspended with its wings outstretched. Also, colourful mobiles, wall decorations all with various figures in shapes of a ballet dancer, clown and bouncing puppets.

Mobiles



12610
Mobile "Bears"
44 x 42 x 8 cm



12510
Mobile "Storks"
44 x 42 x 8 cm



12630
Mobile "Aliens"
44 x 42 x 8 cm



21870
Ballerina
32 x 44 cm



21840
Pinocchio
32 x 44 cm



21850
Clown
52 x 35 cm

Decoration



67110 R
67110 L
Bluebird
wardrobe peg
20 x 14 x 9 cm



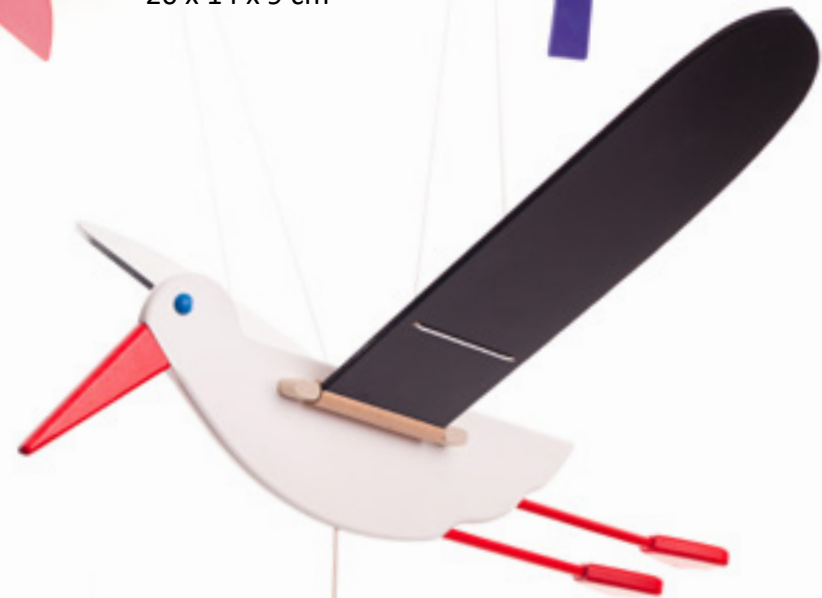
67130 R
67130 L
Yellowbird
wardrobe peg
20 x 14 x 9 cm



67150
Toucan
wardrobe peg
21 x 14 x 9 cm



67210
Rabbit
wardrobe peg
51 x 22 x 6,5 cm



12730
Stork
75 x 40 x 15 cm



12710
Seagull
75 x 40 x 15 cm



Oh help!
Oh no!
It's a
gruffalo!



Collection of wooden toys
designed and carefully
manufactured in Poland by Bajo.



Children will love to play with these two figurines that move their arms and legs to create different poses. The Gruffalo's ears are made of brown felt and both their tails are made from cotton cord.



1½+

78810
Gruffalo & Mouse figures
Gruffalo: 11 x 7 x 21 cm
Mouse: 6 x 5 x 11 cm



1½+

78880
Mini Gruffalo figurine
8 x 6 x 15 cm



1½+

78840
Gruffalo & Mouse
push along toy
37 x 11 x 42 cm



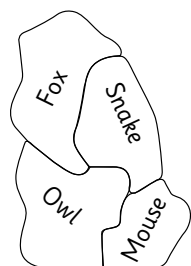
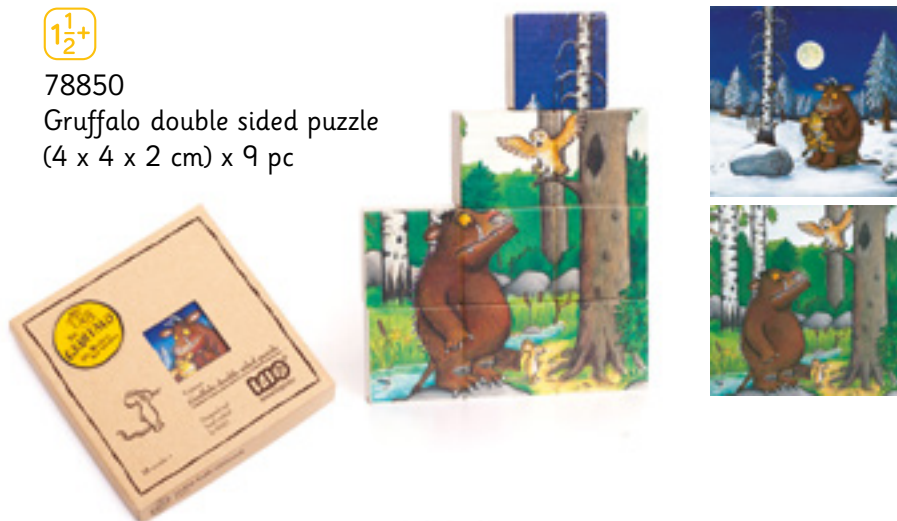
Watch Mouse run around Gruffalo as you push the toy forward. When Mouse is tired of running you can take Gruffalo off the toy and play with him separately.



Slender block puzzle with two scenes to build. Recreate the pictures from the best-selling stories "The Gruffalo" and "The Gruffalo's Child", or use them as building blocks.

 $1\frac{1}{2}^+$

78850
Gruffalo double sided puzzle
(4 x 4 x 2 cm) x 9 pc



4 pieces puzzle

$1\frac{1}{2}^+$

78860
Gruffalo character
puzzle
12 x 1,5 x 19,5 cm
4 pc



3+

78820
Gruffalo alphabet blocks
(4 x 4 x 2 cm) x 26 pc




3+

78890
Gruffalo alphabet blocks
German version
(4 x 4 x 2 cm) x 26 pc



Help little ones to read with these two-sided alphabet blocks. Images and example words have been taken from the world of the Gruffalo and beautifully printed on smooth wooden blocks. Build them, stack them or join them to make new words.




 ¹⁶ 79000
Gruffalo display
*Toys not included



78940
Magnetic board
display
26 x 19 x 0,5 cm

*Magnetic figure
is not included.



 ¹⁶ 78930
Gruffalo wardrobe
Theatre



 ¹⁶ 78920
Gruffalo peg



78920F

78920G

789200



2



3



4



5



3+ 79010 (1 - 5)
Gruffalo magnetic
creatures set
18 magn.
45mm diameter



3+ 78830
Gruffalo wooden theatre
30 x 17 x 6 cm
18 pc

Recreate the Gruffalo story with this 18 piece wooden theatre. The theatre can be large or small depending on how you put the stage together. There are two possible backgrounds with lots of extra pieces including trees, grass and rocks, and of course the five main characters.



3+
78870
Gruffalo yo-yo
30 x 17 x 6 cm



78870S



78870F



78870O



78870M

78870ST
Gruffalo display
for yo-yo



www.gruffalo.com
The Gruffalo © 1999
Julia Donaldson & Axel Scheffler.
The Gruffalo word mark and logo are
trade marks of Julia Donaldson and
Axel Scheffler and used under licence.
Licensed by Magic Light Pictures Ltd.



TOBE

TOBE is a brand which complements the internationally known Bajo brand. Together with new stylish wooden toys, TOBE offers soft toys and bedroom decorations and invites new ideas. TOBE encourages original designs and creates new rules in traditional toy design.

All TOBE products are made in Poland. They are sustainable and eco-friendly well within EU safety standards.



1½+
78070
Hanna
height 43 cm



1½+
78090
Teresa
height 43 cm



1½+
78080
Jane
height 43 cm



This is a lovely group of friendly friends to have. They all have long arms and legs together with elbows and knees. All these features allows the dolls to sit and move elegantly with you. They naturally react to your movements. They fit everywhere and are great companions during fun time for every child.





78600R
Pencil case FISH

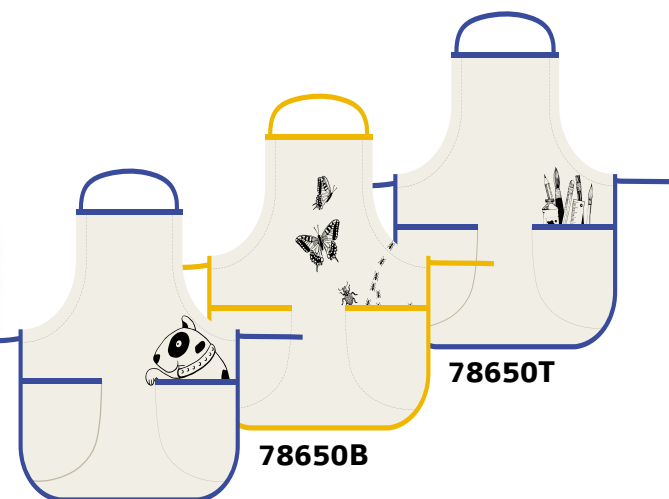


78600B
Pencil case FISH



78650
Apron

78650R



78650D

78650B

78650T



TOBY THE ALIEN



1½+

● **78050G**

● **78050R**

Toby the alien
height 43 cm



Toby, the alien, has four arms with its alien hands. He can easily be tied to objects and fits into backpacks, pockets and handbags. Start playing with him and you will see how adaptable he is and reacts to your every playful movement.



1½+
78120
Gorilla
15 x 12 x 7 cm



1½+
78130
Panda
15 x 11 x 7 cm



1½+ 
78140
Sloth
15 x 11 x 7 cm



1½+
78110
Rhinoceros
19 x 11 x 7 cm



1½+
78100
Polar bear
17 x 10,5 x 7 cm



1½+

78010

Engangered
animals (Memo)

5 x 5 x 1 cm

26 pc



1½+

78040

Forest alphabet

4 x 4 x 3 cm

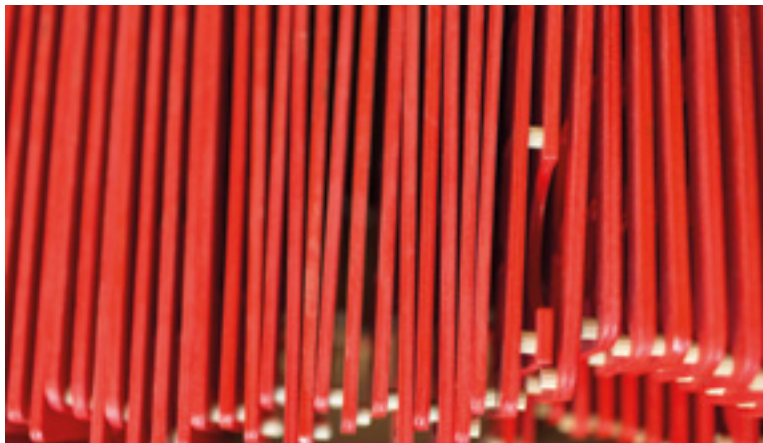
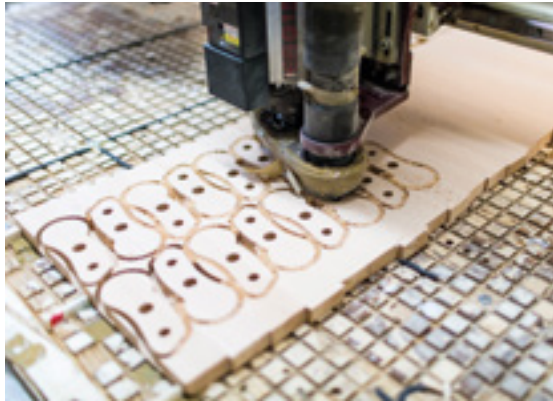
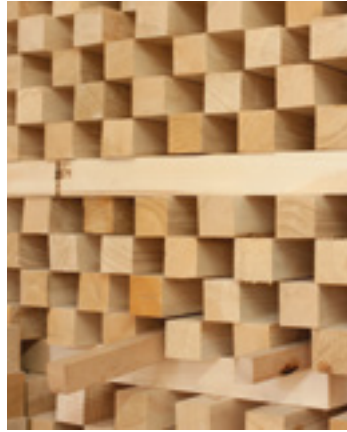
26 pc

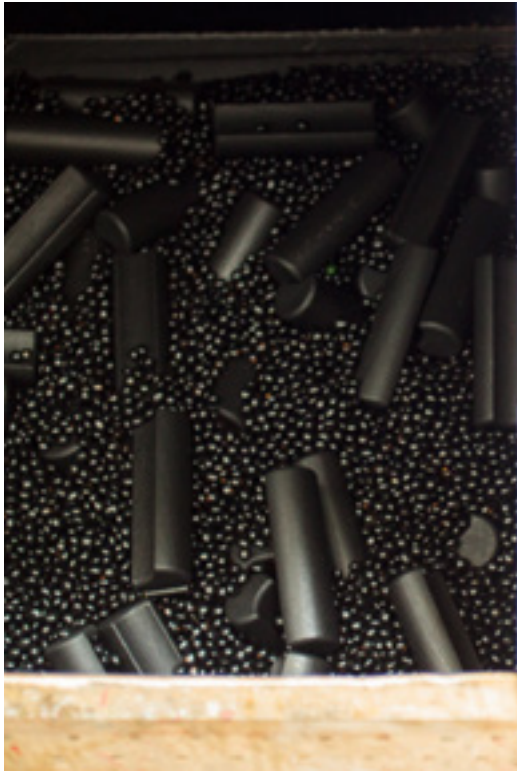


78700

Coin moneybox

11 x 9 cm







BAJO

design & production

PL32-732 Kamionna 97
+48 14 613 72 46
+48 14 613 72 20
bajo@bajo.com.pl
www.bajo.eu
POLAND



High quality
toys designed &
manufactured in
Poland



CANADA

Le Gite du cerf-volant
419 Rte 204 St-Aubert,
Quebec, Canada, G0R 2R0
+1 418-358-0582
info@legiteducerfvolant.ca
www.legiteducerfvolant.ca



NETHERLAND

MAPADOSO
Peter van den Bosch
Meerpad 25
1025 LA Amsterdam (NL)
+31 (0)6 290 35 649
info@mapadoso.com
www.mapadoso.com



SOUTH KOREA

Studio SKINKY
2F, 306-7 BiSan Dong
AnYangSi, KyungKi-Do
431-050
studio_skinky@hotmail.com
www.bajokorea.com



USA

Little Polland Gallery
240 Kent Ave Unit 20
Brooklyn New York 11249
Dagmara Lyczko
+1 3477 33 43 58
littlepolgal@yahoo.com
www.littlepolandgallery.com



GERMANY

Mallmann Distribution
Joanna Mallmann
Gartenstr. 17
32105 Bad Salzuflen
+49 52 22 80 30 54
+49 173 574 09 27
info@mallmann-distribution.de
www.mallmann-distribution.de



NORWAY

WH Toftland AS
Havnegata 7,
4950 Risør, Norway
Carl Erik Milanka Wessel Holst
+47 90 88 88 22
post@whdesign.no



SPAIN rep.

ISOL WORLD
Consell de Cent
159 - 08015 Barcelona
Isabel Lorente
+34 636 185 33
hola@isolworld.com
www.isolworld.com



ITALY

ARGA' di Arnoldo Simone
p.zza P.G. Zampol, 3
32012 Forno di Zoldo (BL)
+39 437 794 105
+39 328 916 36 62
simonearnoldo@ar-ga.it



RUSSIA

LCC Trade Club
64 Leningradsкая str.
Samara, Russia 443099
+7 903 33 44 010
info@toime.ru
www.toime.ru



SWEDEN and DENMARK

EkoLeko AB
Törnrosvägen 10B
181 61 Lidingö
Sweden
+46 8 765 14 00
hej@ekoleko.se
www.ekoleko.se



JAPAN

BorneLund Inc.
1-3-12, Jingumae, Shibuya-ku,
Tokyo 150-0001, Japan
+81 3 5785 0860
info@bornelund.co.jp
www.bornelund.co.jp



SOUTH AFRICA

Dreamtime Toys
Nicola Knott
PO Box 8341
Nahoon, East London
5241
+27 81 039 1256
info@dreamtimetoys.co.za
www.dreamtimetoys.co.za



SWITZERLAND

Happy Clown GmbH
Kirchbergstrasse 105
3400 Burgdorf
+41 344 232 328
+41 344 232 329
info@happyclown.ch
www.happyclown.ch

Direct sales from BAJO Poland
for EU countries not listed here.